

VALIDATOR Plus™ COMPRESSION TESTER

To perform compression and resistance tests to packing & packaging according to International Standard specifications.

Applicable Standards : UNE 137001 - DIN UNE EN ISO 12048 - DIN UNE EN ISO 16495 - ASTM D 642 - ASTM D2659-16
ASTM D 4169 - ASTM D 4577 - ASTM D 7030 - DIN 55440-1 - TAPPI T804 - FEFCO 50 - 49 CFR 178.606 - ISTA Series...

- ❑ Force capacity: 30 kN
- ❑ Platen size: 1000 X 1000 mm
- ❑ Stroke: 1000 mm
- ❑ 3 Load cells for highly accurate testing
- ❑ Top fixed parallel plate (TAPPI)
- ❑ Oscillating Platen System (according to ISO)
- ❑ Strength reading in N, Kg or Lb
- ❑ Automatic platen returns after each test for easy loading of next specimen
- ❑ RS-232 interface
- ❑ Compatible with **LYNX** Integral Management System



Included in the standard supply:

LYNX™ Software for Packing & Packaging Compression Test + **LYNX** Management Module with basic statistics, with control from PC in closed loop using our software test pack with 3 test modules:

- **BCT** Test Module (standard test)
- **Constant Load** (Stacking test)
- **Cyclic Test Module** (Dynamic strain according to Strength and Stroke.)

- ❑ **Force range** 30 KN (6,744 lbf)
- ❑ **Load Measuring System** 3 precision load cells (prevents side loading errors) .03 % FS accuracy
- ❑ **Drive System** DC variable speed drive system
- ❑ **Displayed System Resolution**
 - Load: 0,30 N (0.067 lbf.)
 - Platen Displacement: 0. 001 mm (0.000040 in.)
 - Platen Speed: 0,1 mm/min. (0.0040 in./min.)
- ❑ **Platen Flatness** Flat within 0.25 mm (0.01 in.)
- ❑ **Parallelism of Platens** Parallel within ± 1 mm (± 0.04 in.) per meter
- ❑ **Safety Features**
 - E-Stop
 - Over-Load Protection in software
 - Upper and lower limit switches
 - Load sensor with automatic retreat
 - Communications failure detection integrated with automatic stop
- ❑ **Variable Platen Test Speed** 1 – 350 mm/min (0.04 – 13,78 in./min.)
- ❑ **Platen Retract Speed** 350 mm/min. (13,78 in./min.)
- ❑ **Guidance of the platen** By means of guided columns
- ❑ **The equipment** Is mounted with silence dampening and anti-vibration blocks.
- ❑ **Output interface** RS-232

STRENGTH MEASURE

- ❑ Select units : Newton, Kg & Pounds

EXTENSION MEASURE (DEFORMATION)

- ❑ Select units: millimetres & inches

BOX COMPRESSION TESTER - VALIDATOR Plus™							
MODEL	RANGE KN	RESOLUTION N	PLATENS mm	STROKE mm	DIMENSIONS W x D x H / mm	WEIGHT Kg	POWER w
VALIDATOR Plus	30	0,30	1000 x 1000	1000	1400 x 1210 x 2200	965	850

POWER SUPPLY: 110V/60Hz or 220V/50Hz single phase

PACKAGING DIMENSIONS: 1710 x 1400 x 2450 (W x D x H)

GROSS WEIGHT: 1100 Kg (Treated wood packaging)

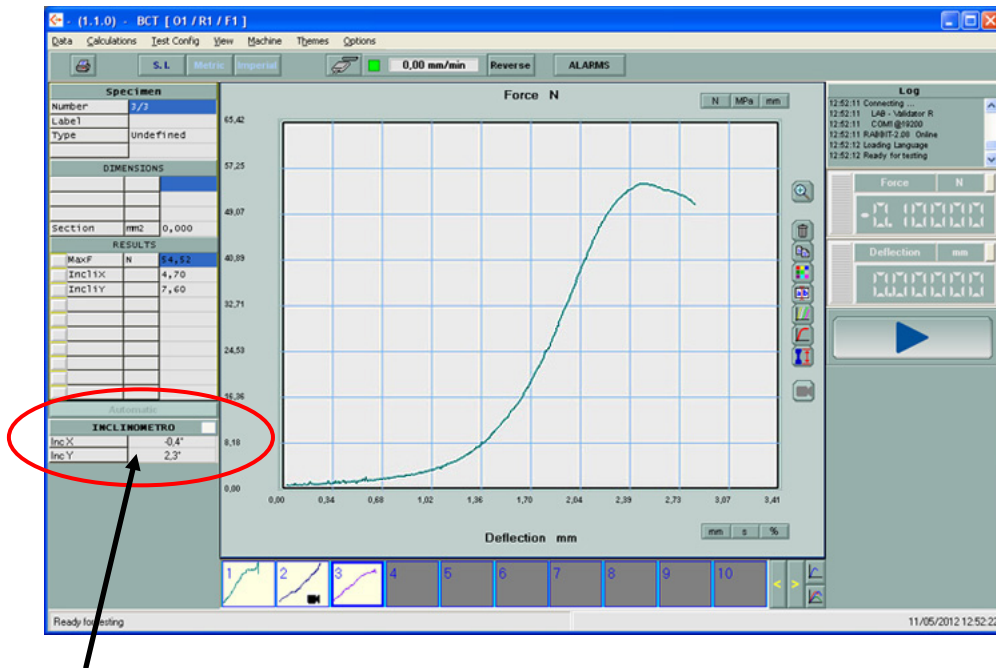
With **OSCILLATING & FIXED PLATE SYSTEM**

For Compression Tests, according to
TAPPI - ISO & FEFCO standards



OPTIONAL ACCESSORY:

Electronic Inclinometer Allows the registration of tilt angle on the axis "X" and "Y" during the test
(* * This accessory can only be installed with the Oscillating Plate System)



Record of the inclination in the X and Y axes

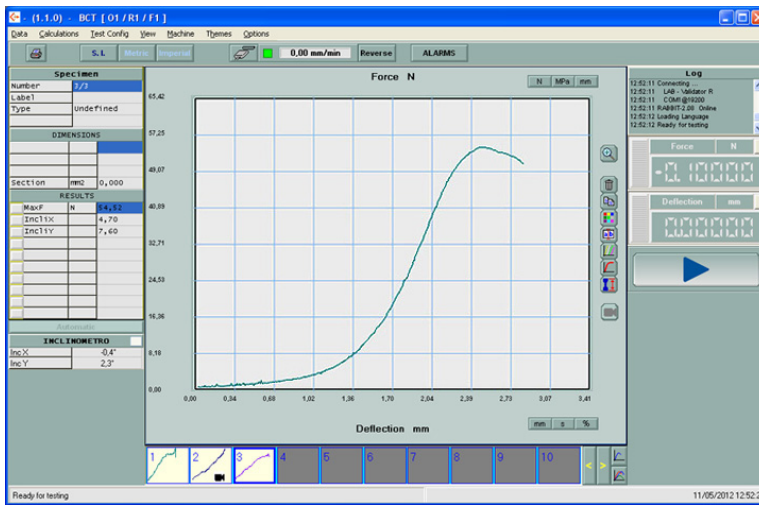
DELIVERY CONTENT:

- ✓ VALIDATOR Plus Compression Tester + Packing & Packaging Compression Test Software
- ✓ **LYNX™** (included 3 test Modules BCT, CONSTANT LOAD, and CYCLIC Tests)
- ✓ **LYNX™** Management Module with Basic Statistics
- ✓ All-in-One PC Touch Screen PC 22" - Windows Operative System

* Windows is a Trade mark of Microsoft Corporation



LYNX Test Program for PACKAGING and PACKING COMPRESSION



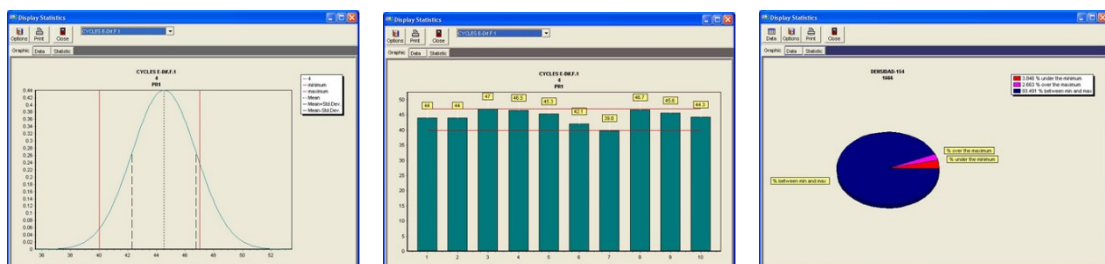
“Data in Real Time...”

- ❑ Enhances quickness in carrying out tests and in obtaining results.
- ❑ Reduces human error.
- ❑ Traceability according to ISO 9000
- ❑ The software records minimum, maximum, and median value as well as standard deviation
- ❑ Up to 100 tests of measurement capacity for each report
- ❑ SAVE, PRINT and COPY to Office Clipboard functions

When combining this test software with your compression system, it is possible to perform box crush tests, constant load compression, and cyclic compression tests. Machine operation is managed via the software, and all data is captured with the software. The data is displayed in real time on your monitor, and then saved and can be retrieved easily in the future.

INCLUDED: LYNX Management Module with Basic Statistics

The LYNX Management Module allows you to manage the data generated, choose the interface language, and prepare and print reports (that you can customize with your logo). You can also change the units displayed, as well as change user accounts and passwords. You can also record the minimum, maximum and optimal values to manage data with statistics, charts bars, GAUSSSEN Bell, tolerances comparatives and export this data to Word, Excel, PDF and more.



* TECHLAB SYSTEMS reserves the right to do any technical modification without advance notice