

## MECHANICAL WEDGE ACTION GRIPS TENSILE TESTS





### Lever Action - Handwheel or Front Crank From 5 - 500 kN of load capacity

Wedge-type self-tightening grips, easy to use and applicable to perform **tensile tests** on samples of **rigid materials** (Metals, Plastics, Composites...) incorporated into a Universal Testing Machine


## CONTENT

	<b>1. <u>Wedge Tensile Test Grips MCL/5-10 (5-10 kN)</u> ..... 4</b>
	<b>2. <u>Wedge Tensile Test Grips MCP-C/10 (10 kN)</u>..... 6</b>
	<b>3. <u>Wedge Tensile Test Grips MCP-L/20 (20 kN)</u> ..... 7</b>
	<b>4. <u>Wedge Tensile Test Grips MCP-L/50 (50 0kN)</u>..... 8</b>
	<b>5. <u>Wedge Tensile Test Grips MCV/20 (20 kN)</u> ..... 9</b>
	<b>6. <u>Wedge Tensile Test Grips MCV/50 (50 kN)</u>..... 10</b>

7.		<b><u>Wedge Tensile Test Grips MCV/100 (100 kN) ..... 11</u></b>
----	---	--

8.		<b><u>Wedge Tensile Test Grips MCV/150 (150 kN) ..... 12</u></b>
----	---	--

9.		<b><u>Wedge Tensile Test Grips MC-mf/50 (50 kN) ..... 13</u></b>
----	---	--

10.		<b><u>Wedge Tensile Test Grips MC-mf/HC (100-500 kN) ..... 16</u></b>
-----	---	---

**Tensile Wedge Grips model MCL-5 (5 kN) (side lever action)**  
**Tensile Wedge Grips model MCL-10 (10 kN) (side lever action)**

Wedge-type self-tightening grips, easy to use and applicable to perform **tensile tests** on small samples of rigid materials (**Metals, Plastics, Composites...**) incorporated into a Universal Testing Machine



**GENERAL INFORMATION**

Easy-to-use wedge grips, designed for tensile testing of low-resistance metals and plastics. The wedge grip design ensures clamping on the sample as the force increases and prevents slippage, the initial force is applied by the action of the side lever for loading and unloading the specimens. Jaws with different types of finish on the faces are interchangeable for different types of samples and dimensions.

**Wedge Jaws 5 kN “MCL-5”**

Suitable for testing small samples

**Scope of supply**

2 grips are supplied, but only 1 can be ordered

Grips and jaws need to be ordered separately.

MODEL	MCL-5
• <b>Load capacity:</b>	5 kN
• <b>Body:</b>	Steel, manganese phosphate coating
• <b>Temperature range:</b>	0°C to +130°C Further temperature ranges on request
• <b>Weight:</b>	0.9 kg (without jaws)
• <b>Scope of supply:</b>	1 pair (without jaws)

**Jaws for MCL-5 Grips: supply of 1 set = 4 jaws**

Model	Surface	Clamping surface H x W	Opening	Weight
<b>MCL-5/BP</b>	Jaws serrated (pyramids)	40x10 mm	0 – 8 mm	0.15 kg
<b>MCL-5/BV</b>	V-Jaws	Clamping height 40 mm	2 – 8 mm Ø	0.15 kg

**Testing 3mm diameter fine wire**



**BP For multiple applications**  
 Pyramids (serrated) 0.8x45 °,  
 hardened steel



**BV For all types of round specimens**  
 Tooth pitch 0.8 mm, hardened steel



## Tensile Wedge Grips model MCL-10 (10 kN) (side lever action)

Universal purpose wedge grips

The grips are supplied in pairs, but can be ordered individually.

Grips and jaws have to be ordered separately. Jaws of other dimensions can be requested.



<b>Model</b>	<b>MCL-10</b>
• <b>Load capacity:</b>	10 kN
• <b>Body:</b>	Steel, manganese phosphate coating 0°C to +130°C (MCL-10)
• <b>Temperature range:</b>	0°C to +130°C (MCL-10)
<b>Peso (cada mordaza)</b>	1.36kg (without jaws)
• <b>Weight:</b>	1 Pair od Grips (without jaws)

Jaws for MCL-10 Grips: supply of 1 set = 4 jaws

Model	Surface	Clamping surface HxW	Opening	Weight
<b>MCL-10/BP</b>	Serrated Jaws	30 x 30 mm	0-8 mm	0,43 Kg
<b>MCL-10/BV</b>	V-Jaws	Clamping Height 30 mm	2-8 mm Ø	0,42 Kg



**MCL-10-Ni**

Surface: Black or nickel plated (for the High Temperature range)



**MCL-10/BP**  
Serrated Jaws  
(pyramids)



**MCL-10/BV**  
For round samples,  
minimum 3mm diameter



**MCL-10/BG**  
Rubber jaws  
(For soft materials)



**MCL-10/BD**  
Diamond jaws  
For fine wires



**BP: For multiple applications**  
Pyramides (serrated) 1x45 °, 58HRC hardened steel



**BV: For all kinds of round specimens**  
Tooth pitch 1.2 mm, 58HRC Hardened Steel

## Tensile Wedge Grips model MCP-C/10 (10 kN) (center lever action)

Wedge-type self-tightening grips, easy to use and applicable to perform **tensile tests** on small samples of rigid materials (**Metals, Plastics, Composites...**) incorporated into a Universal Testing Machine



### GENERAL INFORMATION

Easy-to-use wedge grips designed for tensile testing of medium strength metals and plastics. The wedge grip design ensures clamping on the sample as the force increases and prevents slippage, the initial force is applied by the action of the central lever for loading and unloading the specimens. Jaws with different types of finish on the faces are interchangeable for different types of samples and dimensions.

### Scope of supply

2 grips are supplied, but only 1 can be ordered  
Grips and Jaws have to be ordered separately

<b>Model</b>	<b>MCP-C/10</b>
<b>Load capacity:</b>	10 kN
<b>Temperature range:</b>	0 °C to +130 °C
<b>Body:</b>	Steel, Manganese Phosphate coated
<b>Weight of each grip:</b>	0,90 Kg (without jaws)

**Jaws for Grips MCP/10: The supply of 1 set = 4 jaws**

Model	Surface Finish	Clamping surface HxW	Opening	Weight per Pair
MCP-C/10-BP	Serrated Jaws (pyramids)	40 x 34 mm	0 – 8 mm	0,15 Kg
MCP-C/10-BV	V-Jaws	Clamping height 40 mm	2 – 8 mm Ø	0,15 Kg

Consult other jaw finishes



#### BP - For multiple applications

Pyramids (serrated) 1.2 x 45 °, hardened steel 58 HRC



#### BV - For all types of round samples

Tooth pitch 1.2 mm, hardened steel 58 HRC





## Tensile Wedge Grips model MCP-L/20 (20 kN) (side lever action)

Wedge-type self-tightening grips, easy to use and applicable to perform **tensile tests** on small samples of rigid materials (**Metals, Plastics, Composites...**) incorporated into a Universal Testing Machine



### GENERAL INFORMATION

Easy-to-use wedge grips designed for tensile testing of medium strength metals and plastics. The wedge grip design ensures clamping on the sample as the force increases and prevents slippage, the initial force is applied by the action of the central lever for loading and unloading the specimens. Jaws with different types of finish on the faces are interchangeable for different types of samples and dimensions.

### Scope of supply

2 grips are supplied, but only 1 can be ordered  
Grips and Jaws have to be ordered separately

<b>Model</b>	<b>MCP-L/20</b>
<b>Load capacity:</b>	20 kN
<b>Temperature range:</b>	0 °C to +130 °C -70 °C to +280 °C (MCP-L/P-Ni)
<b>Body:</b>	Steel, Manganese Phosphate coated
<b>Weight of each grip:</b>	3,80 Kg (without jaws)

**Jaws for Grips MCP-L / 20: the supply of 1 set = 4 jaws**

Model	Surface Finish	Clamping surface HxW	Opening	Weight per Pair
<b>MCP-L-BP</b>	Serrated Jaws (pyramids)	50 x 35 mm	0 – 13 mm	0,48 Kg
<b>MCP-L-BP16</b>	Serrated Jaws (pyramids)	50 x 35 mm	4 – 16 mm	0,41 Kg
<b>MCP-L-BV13</b>	V-Jaws	Clamping height 50 mm	3 – 13 mm Ø	0,46 Kg
<b>MCP-L-BV16</b>	V-Jaws	Clamping height 50 mm	4 – 15 mm Ø	0,41 Kg
<b>MCP-L-BV20</b>	V-Jaws	Clamping height 50 mm	10 – 20 mm Ø	0,60 Kg

Consult other jaw finishes



#### BP - For multiple applications

Pyramids (serrated) 1.2 x 45 °, hardened steel 58 HRC



#### BV - For all types of round samples

Tooth pitch 1.2 mm, hardened steel 58 HRC



## Tensile Wedge Grips model MCP-L/50 (50 kN) (side lever action)

Wedge-type self-tightening grips, easy to use and applicable to perform **tensile tests** on small samples of rigid materials (**Metals, Plastics, Composites...**) incorporated into a Universal Testing Machine



### GENERAL INFORMATION

Easy-to-use wedge grips designed for tensile testing of medium strength metals and plastics. The wedge grip design ensures clamping on the sample as the force increases and prevents slippage, the initial force is applied by the action of the central lever for loading and unloading the specimens. Jaws with different types of finish on the faces are interchangeable for different types of samples and dimensions.

### Scope of supply

2 grips are supplied, but only 1 can be ordered  
Grips and Jaws have to be ordered separately

<b>Model</b>	<b>MCP-L50</b>
<b>Load capacity:</b>	20 kN
<b>Temperature range:</b>	0 °C to +130 °C -70 °C to +280 °C (MCP-L/P-Ni)
<b>Body:</b>	Steel, Manganese Phosphate coated
<b>Weight each grip:</b>	6,75 Kg (without jaws)

Jaws for Grips MCP-L /50: the supply of 1 set = 4 jaws

Modelo	Acabado Superficial	Superficie Amarre HxW	Apertura	Peso por Par
<b>MCP-L-BP</b>	Picado pirámide	50 x 35 mm	0 – 13 mm	0,48 Kg
<b>MCP-L-BP16</b>	Picado pirámide	50 x 35 mm	4 – 16 mm	0,41 Kg
<b>MCP-L-BV13</b>	Mandíbulas en V	Altura amarre 50 mm	3 – 13 mm Ø	0,46 Kg
<b>MCP-L-BV16</b>	Mandíbulas en V	Altura amarre 50 mm	4 – 15 mm Ø	0,41 Kg
<b>MCP-L-BV20</b>	Mandíbulas en V	Altura amarre 50 mm	10 – 20 mm Ø	0,60 Kg

Otros acabados de mandíbulas consultar



**BP - For multiple applications**  
Pyramids (serrated) 1.2 x 45 °,  
hardened steel 58 HRC



**BV - For all types of round samples**  
Tooth pitch 1.2 mm, hardened steel 58 HRC





## Tensile Wedge Grips model MCV/20 (20 kN) (top wheel action)

Wedge-type self-tightening grips, easy to use and applicable to perform **tensile tests** on samples of rigid materials of medium resistance (**Metals, Plastics, Composites...**) incorporated in a Universal Testing Machine



### GENERAL INFORMATION

Easy-to-use wedge grips designed for tensile testing of medium strength metals and plastics. The wedge grip design ensures clamping on the specimen as the force increases and prevents slippage, the initial force is applied by the action of the 4-handle handwheel screw for loading and unloading the specimens. Jaws with different types of finish on the faces are interchangeable for different types of samples and dimensions.

#### Scope of supply:

2 grips are supplied, but only 1 can be ordered (jaws not included)  
Jaws have to be ordered separately

<b>Model</b>	<b>MCV-20</b>
<b>Load capacity:</b>	20 kN
<b>Temperature range:</b>	0 °C to +130 °C and -80 °C to +280 °C (MCV/20-Ni)
<b>Body:</b>	Steel, Manganese Phosphate coated
<b>Grip Height min./max.:</b>	189 – 211 mm
<b>Grip width:</b>	162 mm
<b>Weight of each grip:</b>	5,50 Kg (incluidas las mandíbulas)

**Jaws for Grips MCV/20: the supply of 1 set = 4 jaws**

Model	Surface Finish	Clamping surface HxW	Opening	Weight per Pair
MCV/20-BP10	Serrated pyramids 1,2X45°	52 x 40 mm	0 – 10 mm	0,74 Kg
MCV/20-BP16	Serrated pyramids 1,2X45°	52 x 40 mm	6 – 16 mm	0,61 Kg
MCV/20-BP22	Serrated pyramids 1,2X45°	52 x 40 mm	12 – 22 mm Ø	0,52 Kg
MCV/20-BV10	V-Jaws	Clamping height 50 mm	3 – 10 mm Ø	0,75 Kg
MCV/20-BV16	V-Jaws	Clamping height 50 mm	6 – 16 mm Ø	0,65 Kg
MCV/20-BV22	V-Jaws	Clamping height 50 mm	12 – 22 mm Ø	0,54 Kg

Consult other jaw finishes



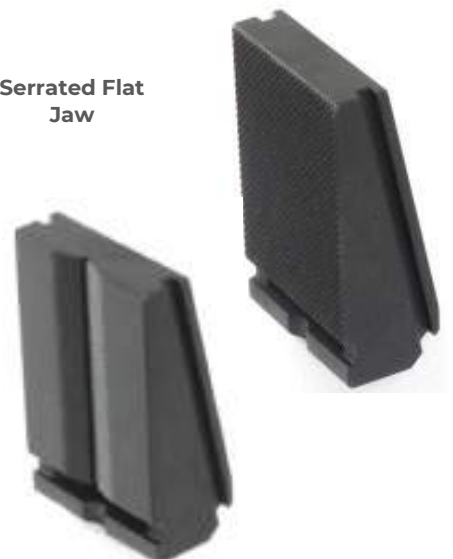
**BP - For multiple applications**  
Pyramids (serrated) 1,2 x 45°,  
hardened steel 58 HRC



**BV - For all types of round samples**  
Tooth pitch 1.2 mm, hardened steel 58 HRC

Serrated Flat  
Jaw

V-Jaw



## Tensile Wedge Grips model MCV/50 (50 kN) (top wheel action)

Wedge-type self-tightening grips, easy to use and applicable to perform **tensile tests** on samples of rigid materials of medium resistance (**Metals, Plastics, Composites...**) incorporated in a Universal Testing Machine



### GENERAL INFORMATION

Easy-to-use wedge grips designed for tensile testing of medium strength metals and plastics. The wedge grip design ensures clamping on the specimen as the force increases and prevents slippage, the initial force is applied by the action of the 4-handle handwheel screw for loading and unloading the specimens. Jaws with different types of finish on the faces are interchangeable for different types of samples and dimensions.

#### Scope of supply:

2 grips are supplied, but only 1 can be ordered (jaws not included)  
Jaws have to be ordered separately

<b>Model</b>	<b>MCV-50</b>
<b>Load capacity:</b>	50 kN
<b>Temperature range:</b>	0 °C to +130 °C and -80 °C to +280 °C (MCV/50-Ni)
<b>Body:</b>	Steel, Manganese Phosphate coated
<b>Grip Height min./max.:</b>	257-283 mm
<b>Grip width:</b>	198 mm
<b>Weight of each grip:</b>	17 Kg (including jaws)

**Jaws for Grips MCV/50: the supply of 1 set = 4 jaws**

Model	Surface Finish	Clamping surface HxW	Opening	Weight per Pair
MCV/50-BP17	Serrated pyramids 1,2X45°	66 x 80 mm	0-17 mm	2,07 Kg
MCV/50-BP30	Serrated pyramids 1,2X45°	66 x 80 mm	15-30 mm Ø	1,54 Kg
MCV/50-BV17	V-jaws	Clamping height 52 mm	4-17 mm Ø	2,08 Kg
MCV/50-BV30	V-jaws	Clamping height 52 mm	16-30 mm Ø	1,55 Kg

Consult other jaw finishes



**BP - For multiple applications**  
Pyramids (serrated) 1.2 x 45 °,  
hardened steel 58 HRC

**Serrated Flat Jaw**



**BV - For all types of round samples**  
Tooth pitch 1.2 mm, hardened steel 58 HRC

**V-Jaw**



## Tensile Wedge Grips model MCV/100 (100 kN) (top wheel action)

Wedge-type self-tightening grips, easy to use and applicable to perform **tensile tests** on samples of rigid materials of medium-high resistance (**Metals, Plastics, Composites...**) incorporated in a Universal Testing Machine

### GENERAL INFORMATION

Easy-to-use wedge grips designed for tensile testing of medium strength metals and plastics. The wedge grip design ensures clamping on the specimen as the force increases and prevents slippage, the initial force is applied by the action of the 4-handle handwheel screw for loading and unloading the specimens. Jaws with different types of finish on the faces are interchangeable for different types of samples and dimensions.



### Scope of supply:

2 grips are supplied, but only 1 can be ordered (jaws not included)  
Jaws have to be ordered separately

<b>Modelo</b>	<b>MCV/100</b>
<b>Load capacity:</b>	100 kN
<b>Temperature range:</b>	0 °C to +130 °C and -80 °C to +280 °C (MCV/50-Ni)
<b>Body:</b>	Steel, Manganese Phosphate coated
<b>Grip Height min./max.:</b>	352-369 mm
<b>Grip width:</b>	310 mm
<b>Weight of each grip:</b>	48 Kg (including jaws)

**Mandíbulas para las Mordazas MCV/100: el suministro de 1 juego = 4 mandíbulas**

Model	Surface Finish	Clamping surface HxW	Opening	Weight per Pair
MCV/100-BP16	Serrated pyramids 1,2X45°	95 x 100 mm	0 – 16 mm	4,89 Kg
MCV/100-BP28	Serrated pyramids 1,2X45°	95 x 100 mm	13 – 28 mm Ø	3,67 Kg
MCV/100-BV16	V-jaws	Clamping height 95 mm	5 – 16 mm Ø	4,93 Kg
MCV/100-BV28	V-jaws	Clamping height 95 mm	16 – 28 mm Ø	3,96 Kg

Consult other jaw finishes



**BP - For multiple applications**  
Pyramids (serrated) 1.2 x 45 °,  
hardened steel 58 HRC



**BV - For all types of round samples**  
Tooth pitch 1.2 mm, hardened steel 58 HRC

Serrated Flat Jaw



V-Jaw



## Tensile Wedge Grips model MCV/150 (150 kN) (top wheel action)

Wedge-type self-tightening grips, easy to use and applicable to perform **tensile tests** on samples of rigid materials of medium-high resistance (**Metals, Plastics, Composites...**) incorporated in a Universal Testing Machine



### GENERAL INFORMATION

Easy-to-use wedge grips designed for tensile testing of medium strength metals and plastics. The wedge grip design ensures clamping on the specimen as the force increases and prevents slippage, the initial force is applied by the action of the 4-handle handwheel screw for loading and unloading the specimens. Jaws with different types of finish on the faces are interchangeable for different types of samples and dimensions.

#### Scope of supply:

2 grips are supplied, but only 1 can be ordered (jaws not included)  
Jaws have to be ordered separately

<b>Modelo</b>	<b>MCV/100</b>
<b>Load capacity:</b>	150 kN
<b>Temperature range:</b>	0 °C to +130 °C and -80 °C to +280 °C (MCV/50-Ni)
<b>Body:</b>	Steel, Manganese Phosphate coated
<b>Grip Height min./max.:</b>	347-364 mm
<b>Grip width:</b>	310 mm
<b>Weight of each grip:</b>	48 Kg (including jaws)

**Mandíbulas para las Mordazas MCV/100: el suministro de 1 juego = 4 mandíbulas**

Model	Surface Finish	Clamping surface HxW	Opening	Weight per Pair
MCV/150-BP16	Serrated pyramids 1,2X45°	95 x 100 mm	0 – 16 mm	4,89 Kg
MCV/150-BP28	Serrated pyramids 1,2X45°	95 x 100 mm	17 – 28 mm Ø	3,67 Kg
MCV/150-BV16	V-jaws	Clamping height 95 mm	5 – 16 mm Ø	4,93 Kg
MCV/150-BV28	V-jaws	Clamping height 95 mm	17 – 28 mm Ø	3,96 Kg

Consult other jaw finishes



**BP - For multiple applications**  
Pyramids (serrated) 1.2 x 45 °,  
hardened steel 58 HRC

Serrated Flat  
Jaw



**BV - For all types of round samples**  
Tooth pitch 1.2 mm, hardened steel 58 HRC

V-Jaw



## **Tensile Wedge Grips model MC-mf/50 (50 kN)**

(Opening/closing jaws by front rotary lever)

Wedge type grips used for **tensile tests** on relatively **hard materials** and in different shapes, Dumbbell type specimens, wires, rods, tubular shapes. The wedge jaws facilitate sample loading, with self-tightening action and natural centering positioning of the sample.



### **GENERAL INFORMATION**

Wedge grips used for tensile tests on relatively hard materials and in different shapes, dog bone type specimens, wires, rods, tubular shapes. The wedge grips facilitate sample loading, with self-tightening action and natural centering positioning of the sample.

The design characteristics of the MC / mf grips with a door in their structure allow the frame to be rigidly maintained under the test load, supporting higher loads than open wedge grips.

They also have a manual crank preload mechanism (optional with the help of compressed air) so that the jaws can bite the sample without the need for more costly hydraulic solutions.

Wedge pull jaws offer a great mechanical advantage in the way they clamp. As the grips are being stressed during the test, the jaws exert greater pressure on the clamping area on the specimens being tested and this prevents slippage in the specimen.

Having a front open area allows the jaws to be easily interchanged, as well as facilitating the placement of the test specimen.

- **Tensile force range: 50 kN**
- **When lowering the wedges by actuation of the central crank, they exert a preload of 10 kN**
- **Low overall height grips with lever handle to open and close jaws**
- **Body Grips: Black Steel**
- **Test Temperature Range: 0°C to + 130°C**
- **Scope of supply: 1 Pair of Grips (without jaws) + Lever handle**



Insert Jaws EBP y EBV



Blank Jaws EBP



Jaws in "V" EBV



**Serrate Jaws**

- Pyramids 1.2x45°
- Hardened Steel 58HRC Manganese Phosphated



**Jaws in V**

- For round specimens
- Tooth pitch 1.2 mm
- Hardened steel 58 HRC manganese phosphated



**Diamond Jaws**

- Gripping surface with synthetic diamond coating

**Insert Jaws for MC-mf-50:** Scope of supply: 1 set = 4 jaws

ITEM	SURFACE	OPENING
<b>MC-mf/50-GT</b>	4 Carriers f/insert jaws	
<b>MC-mf/50-EBP17</b>	Insert Jaws Pyramids (serrated) (1mm 45°) flat samples	0 – 17 mm
<b>MC-mf/50-EBP21</b>	Insert Jaws Pyramids (serrated) (1mm 45°) flat samples	3 – 21 mm
<b>MC-mf/50-EBP26</b>	Insert Jaws Pyramids (serrated) (1mm 45°) flat samples	6 – 26 mm
<b>MC-mf/50-EBV17</b>	V-Insert Jaws for round samples	4 – 17 mm Ø
<b>MC-mf/50-EBP21</b>	V-Insert Jaws for round samples	6 – 21 mm Ø
<b>MC-mf/50-EBP26</b>	V-Insert Jaws for round samples	13 – 26 mm Ø
<b>MC-mf/50-EBD17</b>	Diamond coated Insert Jaws for flat samples	0 – 17 mm
<b>MC-mf/50-EBD21</b>	Diamond coated Insert Jaws for flat samples	3 – 21 mm
<b>MC-mf/50-EBD26</b>	Diamond coated Insert Jaws for flat samples	6 – 26 mm



**Mandíbulas estándar** para MC-mf-50: Alcance suministro: 1 set = 4 mandíbulas

ITEM	SURFACE	OPENING
<b>MC-mf/50-EBP20</b>	Insert Jaws Pyramids (serrated) (1mm 45°) flat samples	0 – 20 mm
<b>MC-mf/50-EBP30</b>	Insert Jaws Pyramids (serrated) (1mm 45°) flat samples	10 – 30 mm
<b>MC-mf/50-EBP40</b>	Insert Jaws Pyramids (serrated) (1mm 45°) flat samples	20 – 40 mm
<b>MC-mf/50-EBV20</b>	V-Insert Jaws for round samples	4 – 20 mm Ø
<b>MC-mf/50-EBV30</b>	V-Insert Jaws for round samples	12 – 30 mm Ø
<b>MC-mf/50-EBV40</b>	V-Insert Jaws for round samples	24 – 40 mm Ø

\* Jaws with other dimensions and surface finishes on request

## **Tensile Wedge Grips MC/mf series (100 to 500 kN)**

(Opening/closing jaws by front rotary lever)

Wedge type grips used for **tensile tests** on **very hard materials** and in different shapes, dog bone type specimens, wires, rods, tubular shapes. The wedge jaws facilitate sample loading, with self-tightening action and natural centering positioning of the sample.



### **INFORMACION GENERAL**

Wedge grips used for tensile tests on relatively hard materials and in different shapes, dog bone type specimens, wires, rods, tubular shapes. The wedge grips facilitate sample loading, with self-tightening action and natural centering positioning of the sample.

The design characteristics of the MC / mf grips with a door in their structure allow the frame to be rigidly maintained under the test load, supporting higher loads than open wedge jaws.

They also have a manual crank preload mechanism (optional with the help of compressed air) so that the jaws can bite the sample without the need for more costly hydraulic solutions.

Wedge pull jaws offer a great mechanical advantage in the way they clamp. As the jaws are being stressed during the test, the jaws exert greater pressure on the clamping area on the specimens being tested and this prevents slippage in the specimen.

Having a front open area allows the jaws to be easily interchanged, as well as facilitating the placement of the test specimen.

Universal grips with lower wedge angle (11°) for many kinds of materials such as aluminium, copper, weak steel till 30 HRC – round and flat.

- **Tensile force range: models between 100 and 500 kN**
- **The use of the central crank exerts a great pre-load on the specimen**
- **Low overall height grips with lever handle for open and close the jaws**
- **Grip Body: Black Steel or Nickel Plated Steel**
- **Test Temperature Range: 0°C to + 130°C (-80°C to + 280°C in Nickel)**
- **Maximum diameter of round specimen clamping up to 2.2 "(55 mm) in diameter**
- **Scope of supply: 1 Pair of Grips (without jaws) + Handle**

Model	Load capacity	Weight per grip with 2 jaws
MC/mf-100	100 kN (22,500 LB)	46 kg
MC/mf-150	150 kN (33,750 LB)	50 kg
MC/mf-250	250 kN (55,000 LB)	70 kg
MC/mf-300	300 kN (67,500 LB)	75 kg
MC/mf-400	400 kN (90,000 LB)	85 kg
MC/mf-500	500 kN (110,000 LB)	100 kg



**MC/mi-250**  
Capacity 250 kN (55,000 LB)



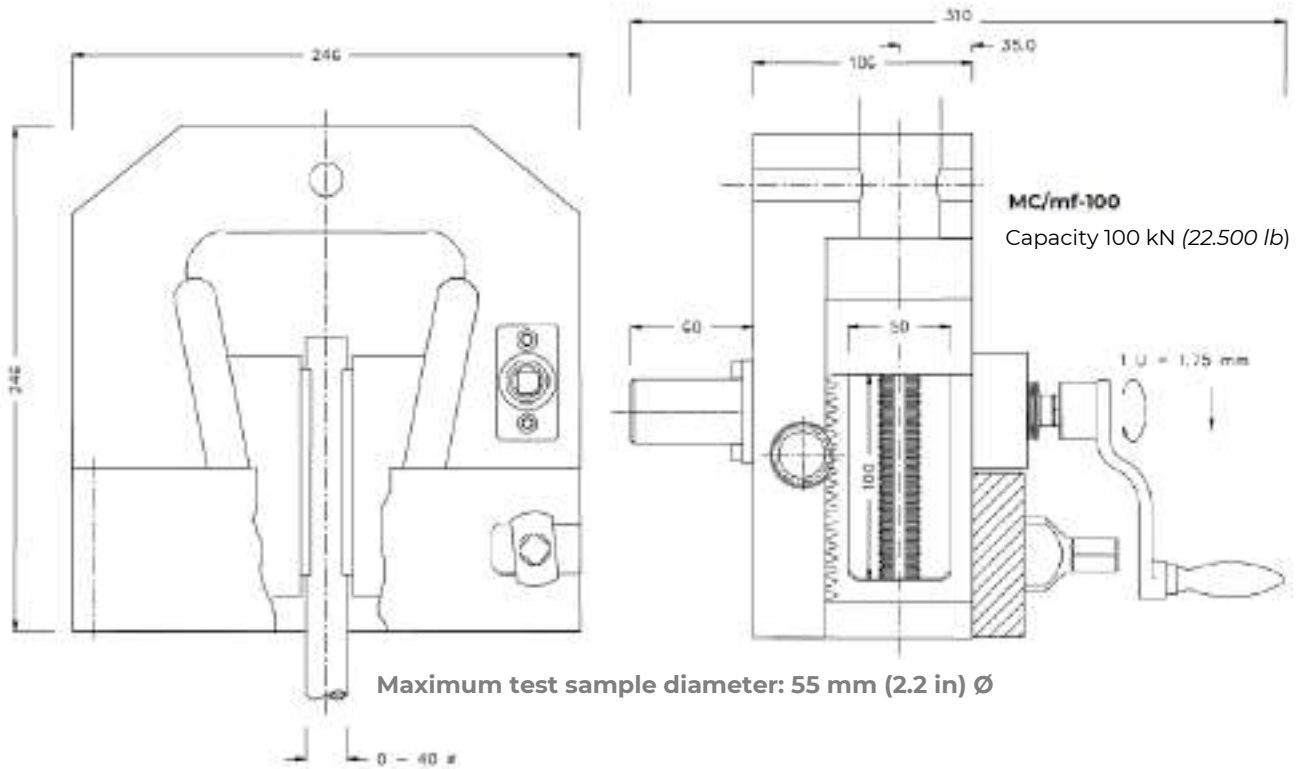
MC/mi-300  
Capacity 300 kN (67,000 LB)



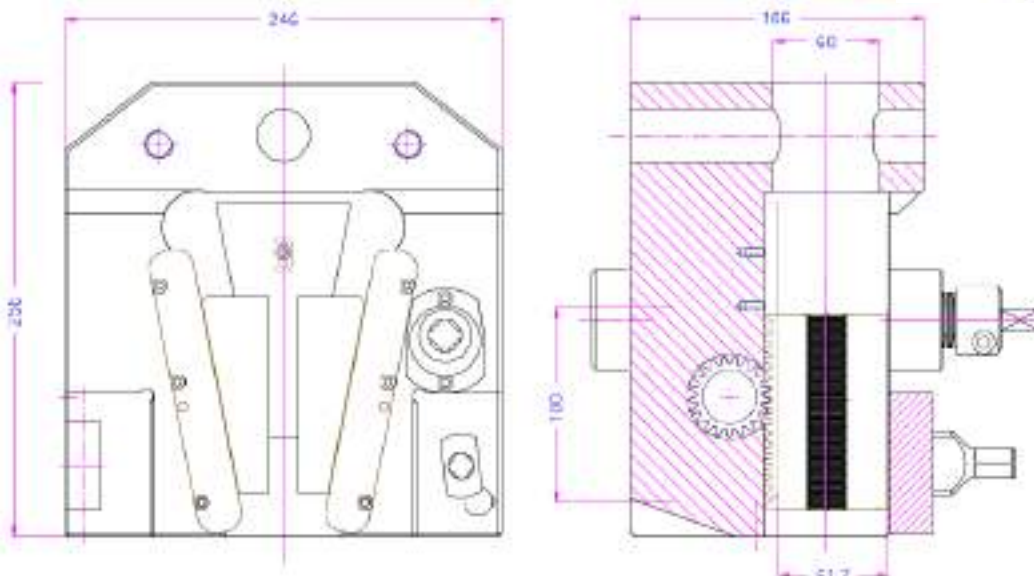
MC/mf-250P  
Pneumatic actuator  
Capacity 250 kN (55,000 LB)



**MC/mf-100-Ni**  
with nickel coating

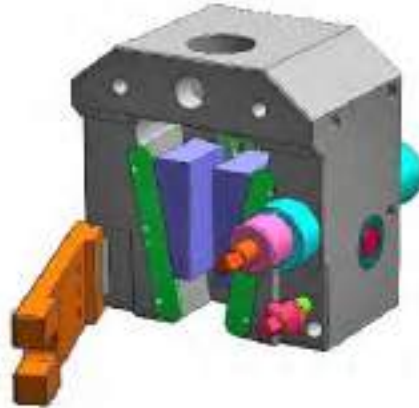


<b>Model</b>	<b>MC/mf-250</b>
<b>Load capacity:</b>	250 kN
<b>Jaws opening:</b>	0-50 mm depending on jaw type
<b>Coupling:</b>	Body Af60. Other couplings on request
<b>Grips:</b>	Nickel Plated Steel
<b>Temperature range:</b>	0 ... +70°C Other temperature ranges on request
<b>Weight:</b>	70 kg for each grip, without jaws
<b>Scope of supply:</b>	1 pair grips (without jaws)

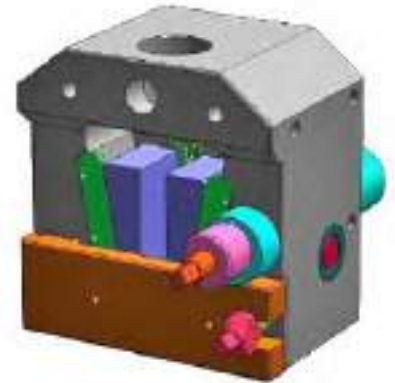




**MC/mf-250** with closing flap open, jaws down

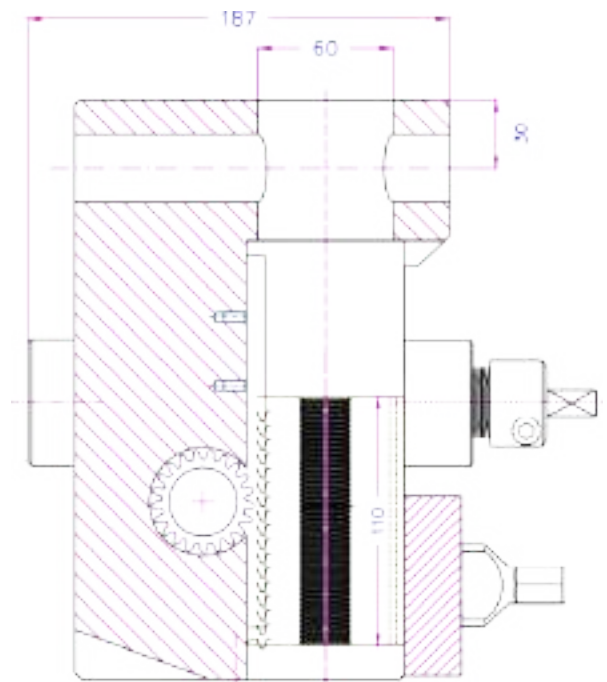
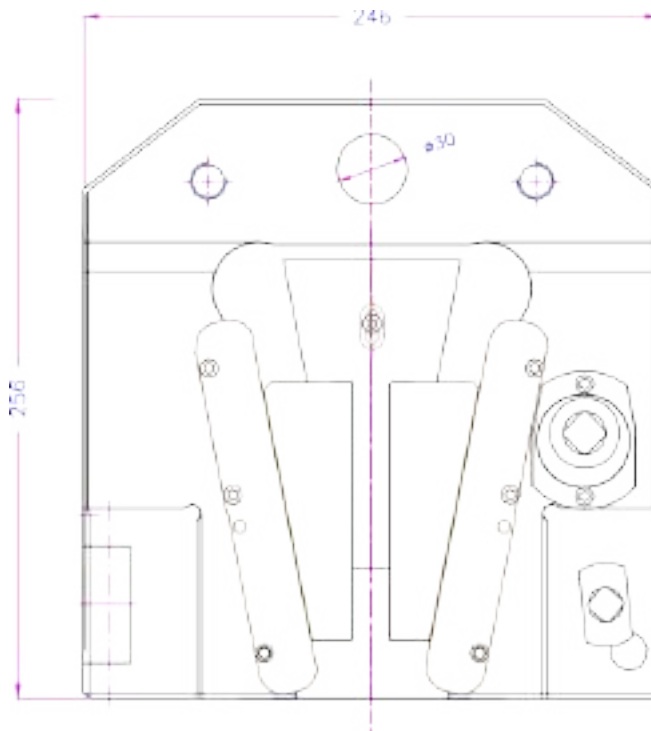


**MC/mf-250** with the closing flap open, the jaws in the middle



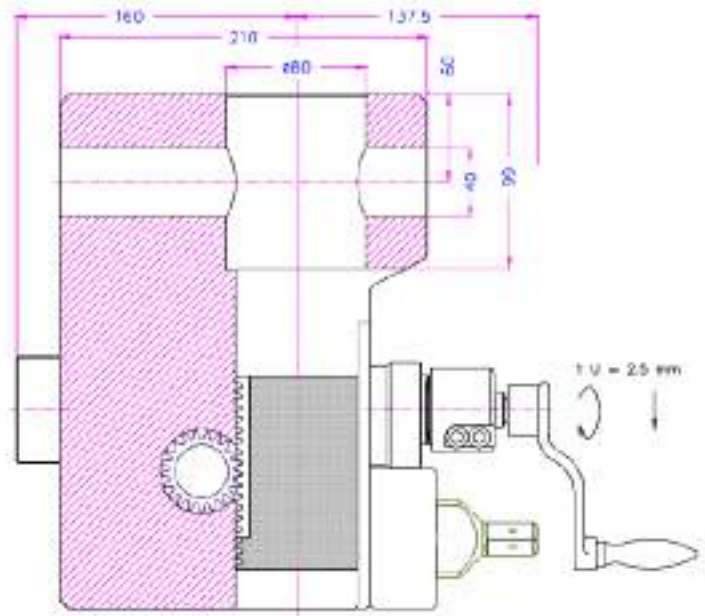
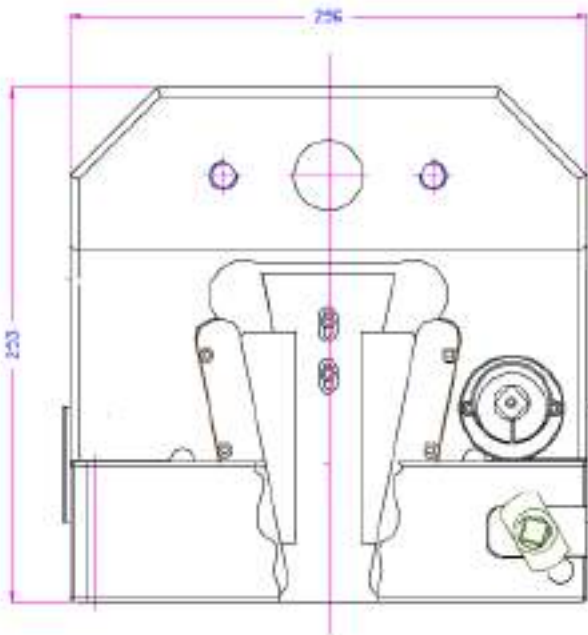
**MC/mf-250** with the closing flap closed, the jaws in the middle

Model	MC/mf-300
Load capacity:	300 kN
Jaws opening:	0-50 mm depending on jaw type
Coupling:	Body Af60. Other couplings on request
Grips:	Nickel Plated Steel
Temperature range:	0 ... +70°C Other temperature ranges on request
Weight:	75 kg for each grip, without jaws
Scope of supply:	1 pair grips (without jaws)





<b>Model</b>	<b>MC/mf-500</b>
<b>Load capacity:</b>	500 kN
<b>Jaws opening:</b>	0-50 mm depending on jaw type
<b>Coupling:</b>	Body Af60. Other couplings on request
<b>Grips:</b>	Nickel Plated Steel
<b>Temperature range:</b>	0 ... +70°C Other temperature ranges on request
<b>Weight:</b>	100 kg for each grip, without jaws
<b>Scope of supply:</b>	1 pair grips (without jaws)



**Examples of customized solutions:**



**MC/mf-250k** Short version



**MF/mf-300** with special long adapter to introduce the grips into a Thermal Test Chamber





**MC/mf-BP**  
For flat samples

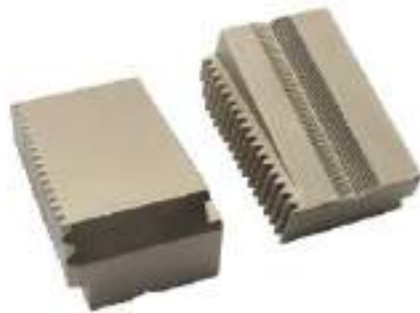
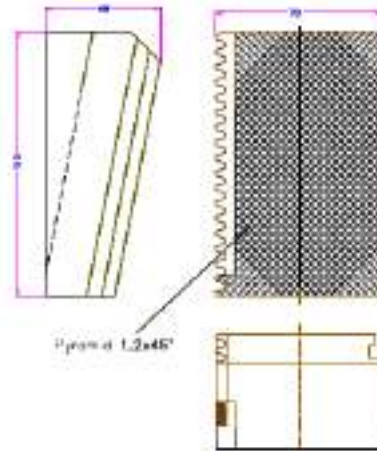


**MC/mf-BV40**  
For round samples

Wedge type jaws - 60mm clamp width X 110mm clamp height		Clamp surface
<b>MC/mf-BP30</b>	<b>Flat wedge jaws</b> – for flat samples - pyramidal finish (serrated) 1.2 x 45 °, 58 HRC hardened steel - for samples from 0 to 30 mm thick.	60 x 110 mm (height x width)
<b>MC/mf-BP50</b>	<b>Flat wedge jaws</b> – for flat specimens - pyramidal finish (serrated) 1.2 x 45 °, 58 HRC hardened steel - for samples from 26 to 50 mm thick.	60 x 110 mm (height x width)
<b>MC/mf-BV30</b>	<b>V-jaws</b> – for round samples - Tooth pitch, 1.2 mm, in 58 HRC hardened steel - for samples from Ø 6 to 30 mm.	60 x 110 mm (height x width)
<b>MC/mf-BV50</b>	<b>V-jaws</b> – for round samples - Tooth pitch, 1.2 mm, in 58 HRC hardened steel - for samples from Ø 30 to 50 mm.	60 x 110 mm (height x width)
Insert wedge jaws		
<b>MC/mf-GT</b>	<b>Insert Jaw Carrier</b> – The advantage is that the jaws can be used from both sides. (Listed below)	
<b>MC/mf-EBP30</b>	<b>Flat Insert Jaws</b> - for flat samples - 1.2 x 45 ° pyramidal (serrated) finish, 58 HRC hardened steel - for samples from 0 to 30 mm thick.	50 x 100 mm (height x width)
<b>MC/mf-EBP34</b>	<b>Flat Insert Jaws</b> - for flat samples - 1.2 x 45 ° pyramidal (serrated) finish, 58 HRC hardened steel - for samples from 4 to 34 mm thick.	50 x 100 mm (height x width)
<b>MC/mf-EBP40</b>	<b>Flat Insert Jaws</b> - for flat samples - 1.2 x 45 ° pyramidal (serrated) finish, 58 HRC hardened steel - for samples from 10 to 40 mm thick.	50 x 100 mm (height x width)
<b>MC/mf-EBP50</b>	<b>Flat Insert Jaws</b> - for flat samples - 1.2 x 45 ° pyramidal (serrated) finish, 58 HRC hardened steel - for samples from 20 to 50 mm thick.	50 x 100 mm (height x width)
<b>MC/mf-EBV32</b>	<b>V-jaws</b> - for round samples - Tooth pitch, 1.2 mm, in 58 HRC hardened steel - for samples from Ø 6 to 32 mm.	50 x 100 mm (height x width)
<b>MC/mf-EBV40</b>	<b>V-jaws</b> - for round samples - Tooth pitch, 1.2 mm, in 58 HRC hardened steel - for samples from Ø 12 to 40 mm.	50 x 100 mm (height x width)
<b>MC/mf-EBV44</b>	<b>V-jaws</b> - for round samples - Tooth pitch, 1.2 mm, in 58 HRC hardened steel - for samples from Ø 16 to 44 mm.	50 x 100 mm (height x width)
<b>MC/mf-EBD</b>	<b>Flat insert jaws</b> - for flat samples - diamond coat surface finish	50 x 100 mm (height x width)
<b>MC/mf-EBVD</b>	<b>Insertable V-jaws</b> - for round samples - diamond-coated surface finish	50 x 100 mm (height x width)



**MC/mf-BP** for testing flat samples



**MC/mf-BV** for testing round samples



**MC/mf-GT**- Carrier for insert jaws  
Models MC/mf-EBP & MC/mf-EBV

**Examples to customize jaws:**



**MC/mf-EBV** insert jaws for round samples



**MC/mf-EBVD24** V-insert jaws diamond covered for round samples



**MC/mf-EBP15-TiNi** titanium nitride coating



**MC/mf-BW35-A28** toothed belt clamps

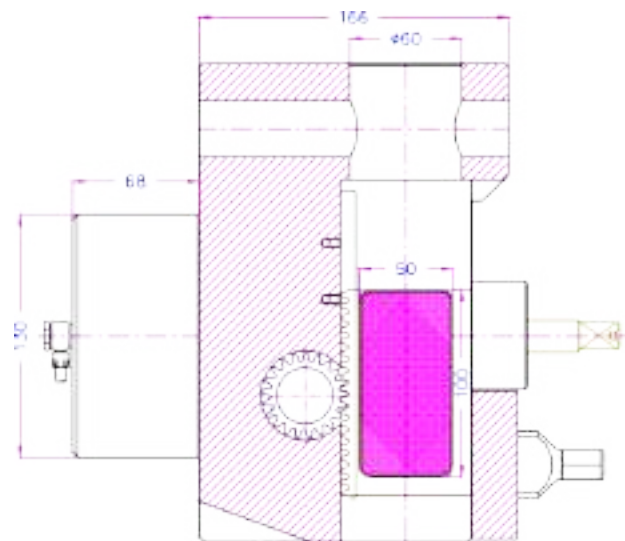
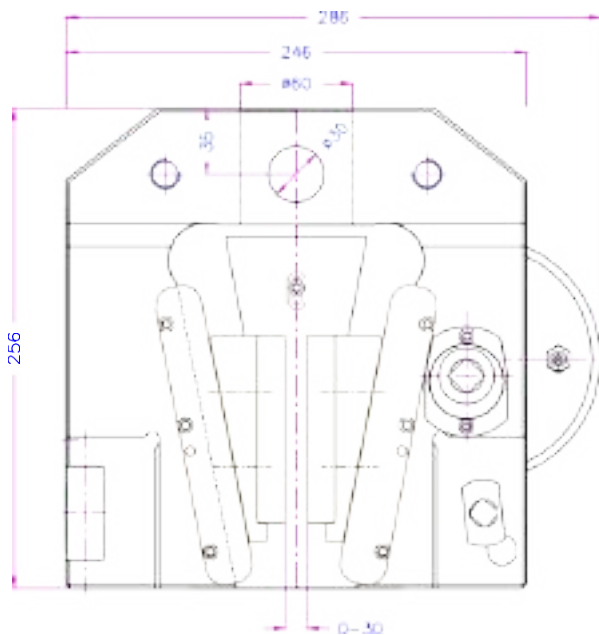
**Accessories:**



**MC/mf-250+Ko**

Double acting cylinder  
Clamping force 12 kN (7 bar)  
Maximum pressure 15 bar with  
UN216 compressor

The crank is only for a rough  
adjustment of the jaw opening



**MC/mf-250+Ko+GT+EBP**

**Jaws for grips MC/mf:** Scope of supply:  
1 Set = 4 jaws  
Opening for jaws BP = 0-30mm

**Insert Jaws**

**MC/mf-EBV35**

Insertion jaws for round samples up to 35mm in diameter and **usable on both sides**



**MC/mf-GT** Carrier for grips MC/ mf-EB  
Jaws GT + EBP + EBV





**MC/mf-100-Ni**

MC/mf-100-Ni  
Nickel Coated



**MC/mf-300**

With special adapter for  
use inside thermal test  
chambers



**MC/mf-250+Ko**

Pneumatic version

Stopper for MC-mf series adjustable



Grip MC-mf with lower bar bending test fixture coupled



Grip MC-mf with attached compression plate



Closing and opening the jaws with a crank:





Recommended Testing Machines:



MTE-5 (to 5 kN)



MTE-25 (to 25 kN)



MTE-50 (to 50 kN)



MTE-100 (to 100 kN)



MTE-400 (to 400 kN)



MTE-300 (to 300 kN)