

## INCLINE IMPACT

Packages in the distribution environment experience sudden side impacts caused by unpredictable motion while in transit. To ensure the integrity of the package, the L.A.B. Incline Impact Test System assists in determining the overall durability of the package or product by impacting all four sides on a ten degree incline surface.

## TEST WITH CONFIDENCE

L.A.B. Equipment's line of Incline Impact Test Systems simulate the hazards encountered in the distribution environment, such as:

- Rough Handling
- Pallet Marshalling
- Rail Car Switching

Complies with ISTA, ASTM, ISO, MIL STD, and other internationally recognized test standards.

## INCLINE IMPACT FEATURES

### Efficient Positioning Mechanism

- Reliable and easy to use Pneumatic Positioning System makes it simple to obtain the desired impact velocity

### Easy Load Dolly

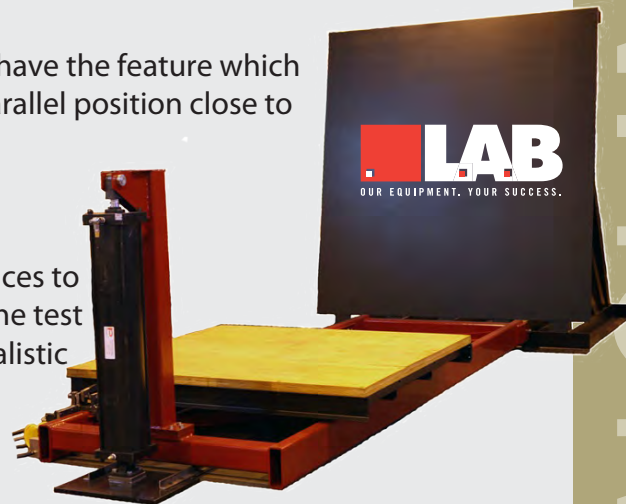
- For ease of loading and unloading, all L.A.B. models have the feature which allows dollies to be loaded with rail assembly in a parallel position close to the floor

### Rigid Backstops

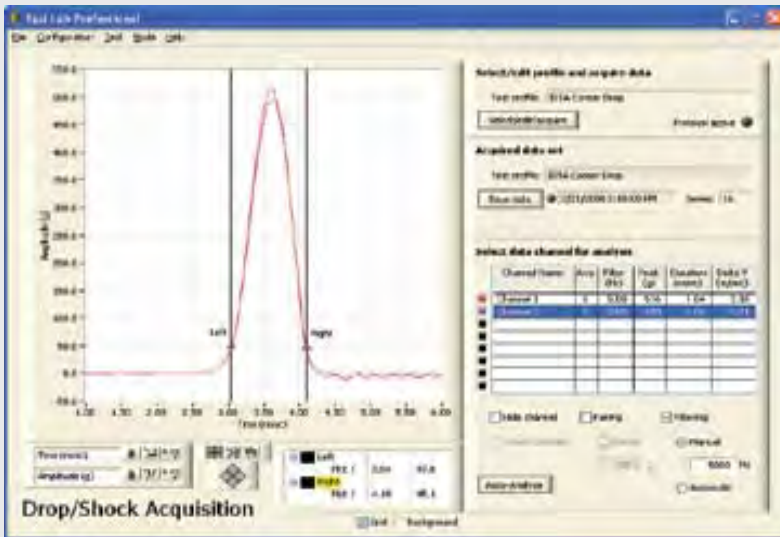
- The Backstop provides rigid, unyielding impact surfaces to ensure that impact forces are applied uniformly to the test specimen. A massive steel framework serves as a realistic impact surface

### Fully Assembled

- L.A.B. completely assembles and tests each machine at our factory to ensure trouble-free installation. Installation requires anchoring the machine to the floor, and providing compressed air



## TEST LAB PROFESSIONAL (TLP)<sup>TM</sup> DATA ACQUISITION SYSTEM: DROP & SHOCK



### TEST LAB PROFESSIONAL

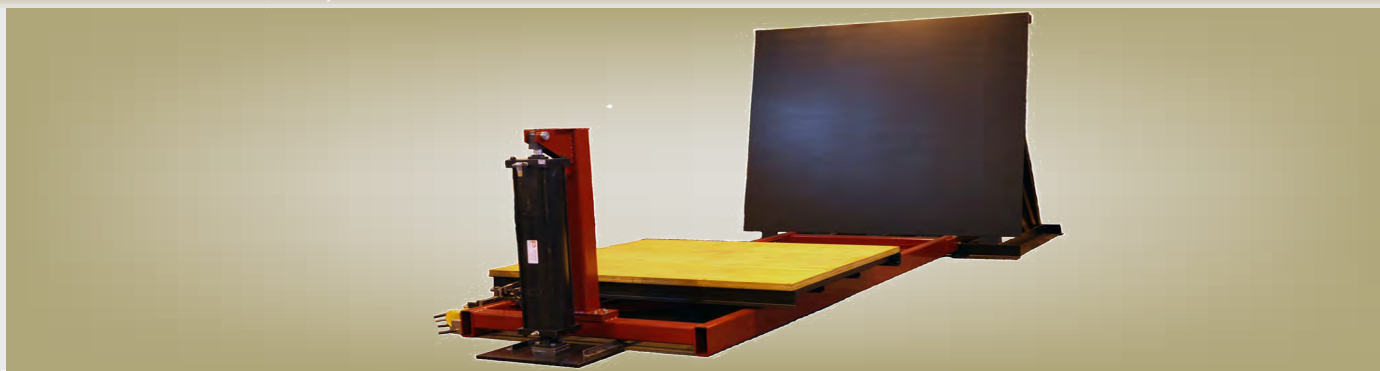
- Professional grade data acquisition and analysis system
- Up to 4 channels
- Automatic sampling rate
- Short pulse duration capture
- Automatic or manual triggering
- Low pass data filtering
- 16 bit A/D
- Multi-tool data manipulation

### 1000 VM - VELOCITY METER

- Product velocity can be displayed in either English or Metric Units
- Optical gate system measures velocity of moving objects such as shock machine carriages, horizontal and incline impact testers, cushion testers, etc.



## INCLINE IMPACT SERIES MODEL COMPARISON



Machine Type	II1000	II2000	II4000	II6000	II8000	II10000
Payload Capacity	1000 lbs	2000 lbs	4000 lbs	6000 lbs	8000 lbs	10000 lbs
Impact Face	60 in x 60 in	72 in x 72 in	84 in - 84 in	84 in - 84 in	84 in - 84 in	96 in - 96 in
Dolly Surface Area	48 in x 48 in	60 in x 60 in	72 in x 72 in	72 in x 72 in	72 in x 72 in	84 in - 84 in
Impact Velocity	8ft/sec	8 ft/sec	8 ft/sec	8 ft/sec	8 ft/sec	8 ft/sec
Simulates Free Fall Height	18 in	18 in	18 in	18 in	18 in	18 in

Due to our continuous commitment to product development, the above specifications and features may be modified without notice.



## VM1200 VELOCITY METER

For ultimate accuracy in incline impact testing and in a variety of other situations.

### TEST WITH CONFIDENCE

- Compliments the incline impact tester with direct measurement and display of velocity
- Minimizes setup and maintenance time
- Easy to read digital display set for Feet/sec or Meters/sec
- Unit can be integrated with most existing incline impact testers on the market
- Required for ASTM, and ISTA specification compliance
- "Stand alone" meter can be conveniently located near the user or Incline Impact tester



### PERFORMANCE

The VM1200 Velocity Meter combines state of the art digital circuitry with simple pushbutton operation. Velocity measurement is done quickly and easily once the reset button is pushed and the dolly triggers the gated measurement system.

### PRECISION

This unit provides a single display of velocity measurement. A single pushbutton user interface allows the user to focus on accurately performing the test.

### ACCURACY

The VM1200 has been factory tested and calibrated to ensure your measurements are accurate and repeatable. L.A.B. provides efficient annual factory calibration for the VM1200 resulting in minimal down time.



*Standard flag, gate,  
and cable*

### SPECIFICATIONS

Accuracy:	1.00Hz to 100.00Hz, +/- 0.1% @ 25°C
Display:	4-6 digits
Input Power:	115 or 220 VAC, 50 or 60 Hz
Power Line Fuse:	1/8 Amp
Sensor Current Draw:	Emitter - 10mA maximum, Receiver - 15mA maximum

### Noteworthy Features of the VM1200

- Product velocity can be displayed in either English or Metric units
- Optical gate system measures velocity of guided moving objects such as shock machine carriages, horizontal and incline impact testers, cushion testers etc.
- System consists of digital readout timing device, optical gate and trigger blade
- Special mounting bracket design specific to each Incline System. Customer needs to specify model if ordering for existing unit to confirm compatibility.